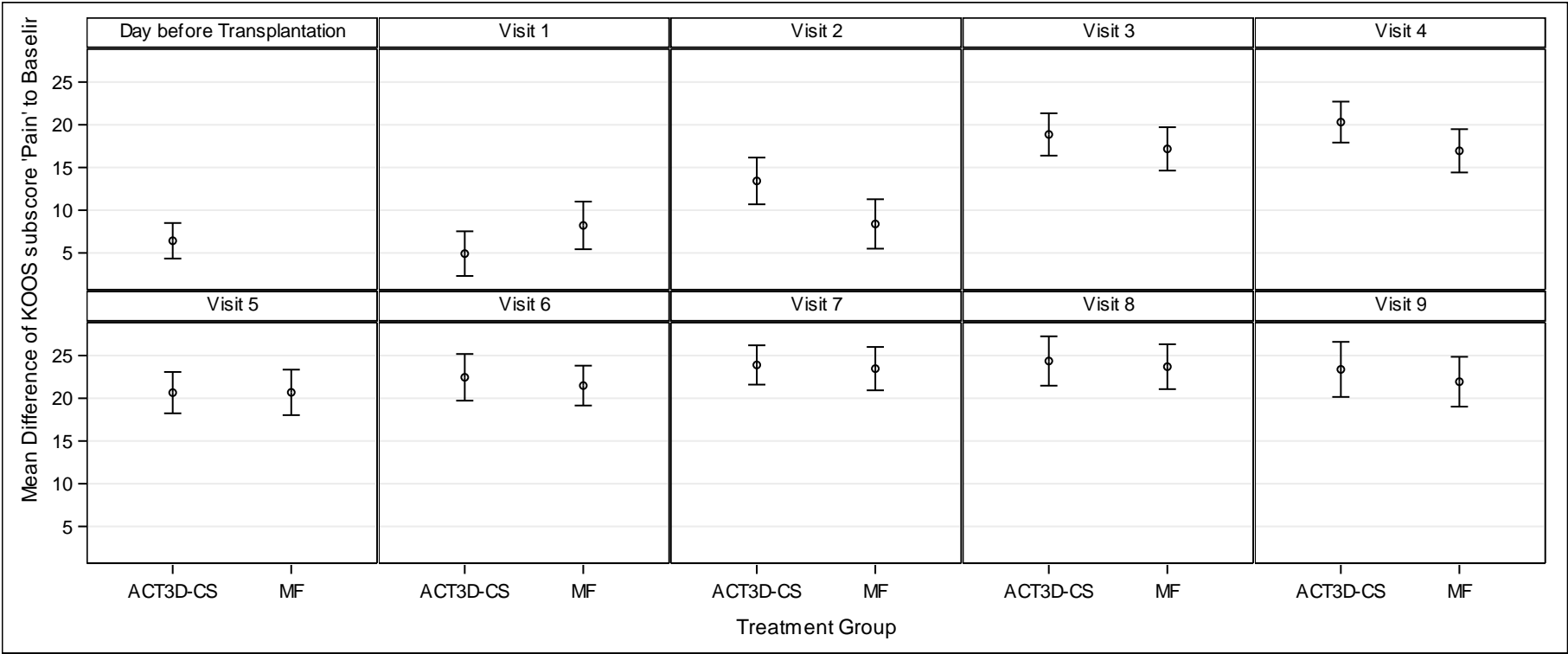


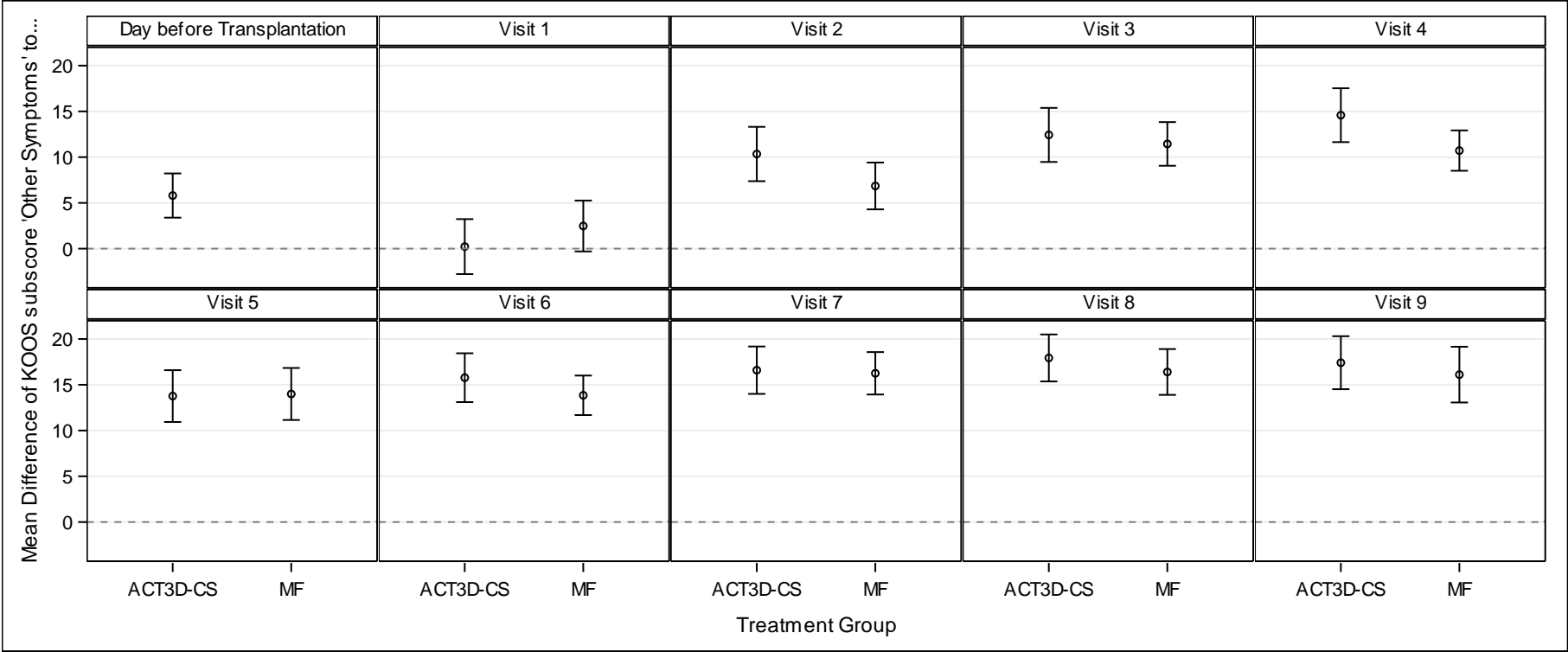
**Figure 14.2 Efficacy Data**  
Figure 14.2.2 Secondary Efficacy Data for ITT1-Population  
Figure 14.2.2.2 Subscores of KOOS for each treatment group over time  
Figure 14.2.2.2.1 KOOS subscore 'Pain'  
Figure 14.2.2.2.1.2 Difference of KOOS subscore 'Pain' for each treatment group over time

Error-Bar-Plot:



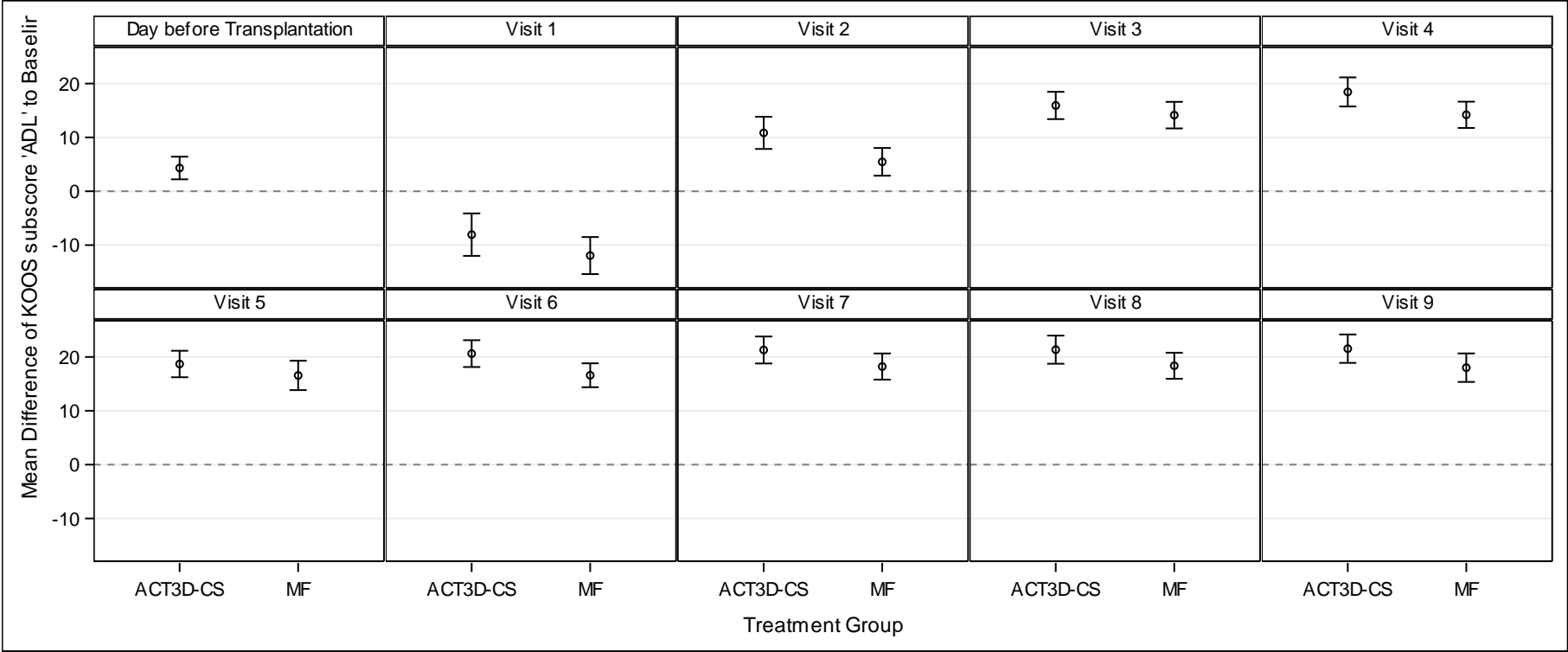
**Figure 14.2 Efficacy Data**  
Figure 14.2.2 Secondary Efficacy Data for ITT1-Population  
Figure 14.2.2.2 Subscores of KOOS for each treatment group over time  
Figure 14.2.2.2.2 KOOS subscore 'Other symptoms'  
Figure 14.2.2.2.2.2 Difference of KOOS subscore 'Other symptoms' for each treatment group over time

Error-Bar-Plot:



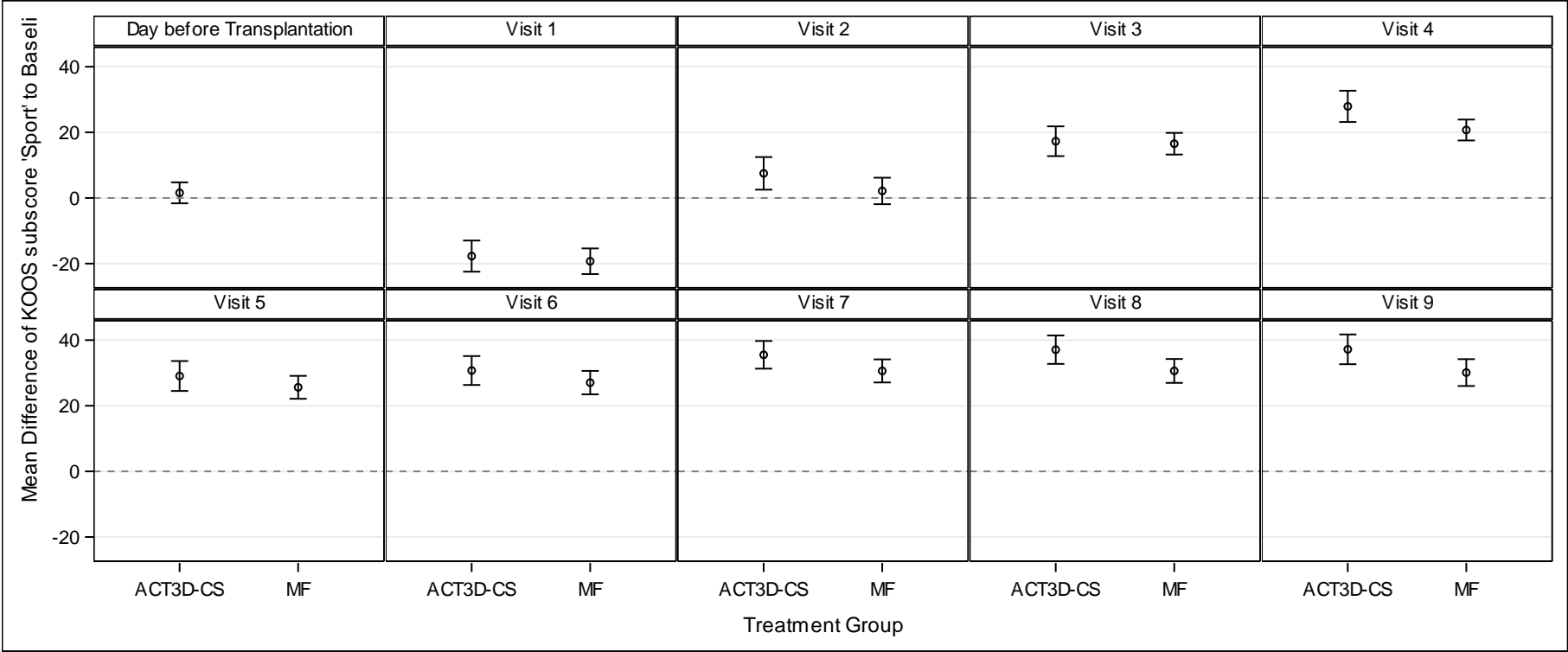
**Figure 14.2 Efficacy Data**  
Figure 14.2.2 Secondary Efficacy Data for ITT1-Population  
Figure 14.2.2.2 Subscores of KOOS for each treatment group over time  
Figure 14.2.2.2.3 KOOS subscore 'Function in daily living'  
Figure 14.2.2.2.3.2 Difference of KOOS subscore 'Function in daily living' for each treatment group over time

Error-Bar-Plot:



**Figure 14.2 Efficacy Data**  
Figure 14.2.2 Secondary Efficacy Data for ITT1-Population  
Figure 14.2.2.2 Subscores of KOOS for each treatment group over time  
Figure 14.2.2.2.4 KOOS subscore 'Function in sport and recreation'  
Figure 14.2.2.2.4.2 Difference of KOOS subscore 'Function in sport and recreation' for each treatment group over time

Error-Bar-Plot:



**Figure 14.2 Efficacy Data**  
Figure 14.2.2 Secondary Efficacy Data for ITT1-Population  
Figure 14.2.2.2 Subscores of KOOS for each treatment group over time  
Figure 14.2.2.2.5 KOOS subscore 'Knee-related Quality of life'  
Figure 14.2.2.2.5.2 Difference of KOOS subscore 'Knee-related Quality of life' for each treatment group over time

Error-Bar-Plot:

